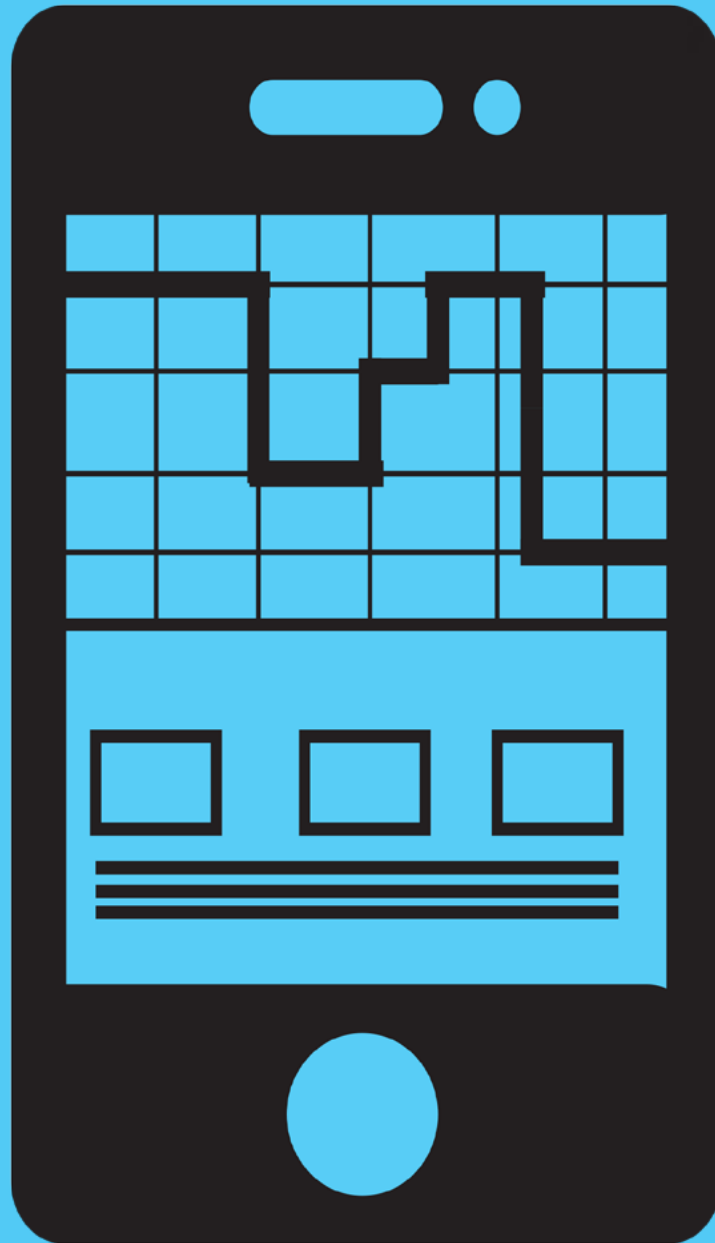


# ELD FACTS

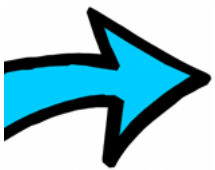


A White Paper  
*By National Fleet Tracking*

# ELD FACTS



*Whether implementing Electronic Logging Devices (ELD) due to FMCSA regulations or strengthening your fleet management and operational systems, it is important to get as much information as possible before making your decision.*



This guide will give insight into key points regarding regulations and other important considerations so you can be prepared.

## ***Why Is Everyone Talking About ELD?***

The Federal Motor Carrier Safety Administration published the final rule requiring the use of ELD's by December 18, 2017. Motor Carriers required to implement ELD's understand little time remains for complete system implementation or face fines. ELD's bring far greater value to an organization than those realized utilizing traditional methods, all without the hassle of using paper logs.



# Who Needs An ELD?

ELD FACTS

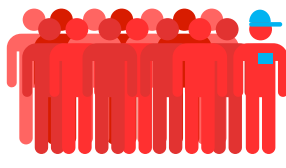


The ELD ruling applies to most motor carriers and drivers who are currently required to maintain records of duty status (RODS) per Part 395, 49 CFR 395.8(a). The rule applies to commercial buses as well as trucks, and to Canada- and Mexico-domiciled drivers.

*Here are some of the vehicles that fall under the hours of service (HOS) requirements set by the FMCSA to help you identify if your company needs to take action:*



Buses that transport more than 8 passengers (including the driver), for compensation.



Buses used to transport more than 15 passengers (including the driver), with no compensation.



Any vehicle that is used to transport hazardous materials that require placards.



Vehicles weighing 10,000 pounds or more.

*The ELD rule allows limited exceptions to the ELD mandate, including:*

- Drivers who operate under the short-haul exceptions may continue using time cards; they are not required to keep RODS and will not be required to use ELDs.
- Drivers who use paper RODS for not more than 8 days out of every 30-day period.
- Drivers who conduct drive-away-tow-away operations, in which the vehicle being driven is the commodity being delivered.
- Drivers of vehicles manufactured before 2000.

855-438-4771

1601 Texas Drive  
Glen Rose, Texas 76043

Sales@nftgps.com

# What Are The Benefits Of ELD?

ELD FACTS



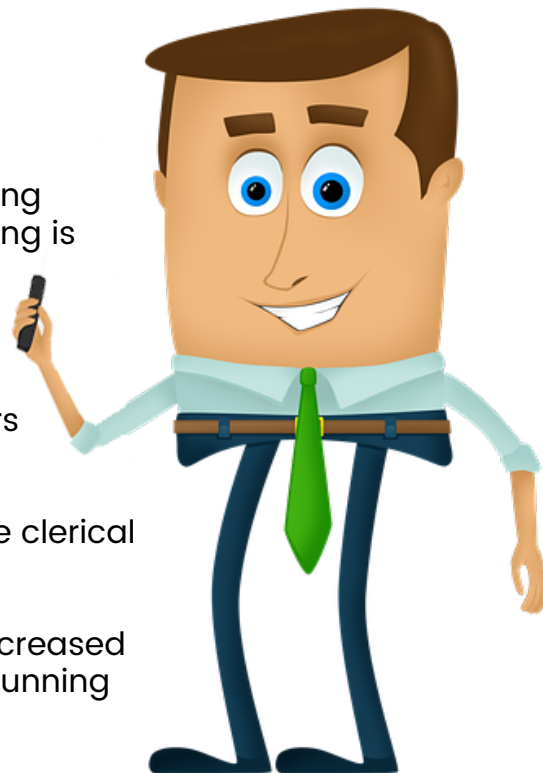
## *The ELD Benefits for Managers*

**Real-Time Electronic Logs** – Know your drivers are staying compliant in real-time. Be at ease knowing that everything is in order upon DOT inspections.

**Improved Dispatching** – If your dispatchers know the drivers hours, they will be better logistics managers, planning routes that will be most efficient given the hours of service available.

**Citation Prevention** – Avoid fines associated with simple clerical errors on paper logs.

**Reduced Costs** – Paper logs are a hassle and require increased time and resources. Ensuring compliance is as easy as running a simple report.



## *The ELD Benefits for Drivers*

**Increased Safety** – The regulation is to help prevent tired drivers from getting behind the wheel thereby decreasing accidents that could result in injuries or even fatalities.

**Improved Roadside Inspections** – How long does an inspection take now? With an ELD, all of the relevant regulatory information is available in one simple device.

**More Available Drive Time** – Traditional paper logs require drivers to log time in 15 minute intervals, whereas with an ELD, duty status changes will be rounded to the nearest minute. Over the period of allowed HOS, a driver can actually regain previously lost drive time.

**Reduced Paperwork** – Conventional methods require drivers to create graphs, make manual entries, and keep redundant copies of paperwork. An ELD automates most of the functions of HOS logging, thereby reducing the possibility of lost paperwork.



1601 Texas Drive  
Glen Rose, Texas 76043



[Sales@nftgps.com](mailto:Sales@nftgps.com)

# Time/Cost Considerations For Implementation

ELD FACTS



- 1 Size of Your Fleet**- Smaller companies may be able to implement an ELD system in a day while larger companies could take a considerable amount of time. The size of your company is the main factor in determining time and cost.
- 2 Ease of Installation**- Some companies may not have the resources to deploy the ELD equipment in-house and may need to seek outsourced assistance.
- 3 Equipment Requirements**- Make sure the ELD provider you choose allows the use of existing mobile electronic devices and does not mandate the use of their proprietary in-cab computers/tablets.
- 4 Training**- Both drivers and administrative personnel must receive proper training before deployment to ensure effective integration.



*Though there are several variables that will determine the actual expense to implement an ELD solution, not being prepared becomes costly.*



855-438-4771



1601 Texas Drive  
Glen Rose, Texas 76043



Sales@nftgps.com

# When Choosing An ELD Solution Provider...

ELD FACTS



When selecting an ELD solution provider, there are several questions you should ask:

## Cost

Is their pricing competitive?

Do they have a good

Reputation?

## Longevity

How long have they been in business?

## Industry Experience

Are they knowledgeable in the transportation industry or simply a device provider?

## Support

Does the support team have the expertise in both the transportation industry and the technology?

855-438-4771

1601 Texas Drive  
Glen Rose, Texas 76043

[Sales@nftgps.com](mailto:Sales@nftgps.com)

# Is There Any Legal Action Against This Regulation?

ELD FACTS



**Yes!**

The Owner Operator Independent Drivers Association (OOIDA) filed the legal brief with the U.S. Court of Appeals for the 7th Circuit, the same court that in 2011 vacated FMCSA's prior rule related to electronic logs, a limited mandate for certain noncompliant carriers. OOIDA led that challenge as well.

*"The agency provided no proof of their claims that the current ELD mandate would improve highway safety. They didn't even attempt to compare the safety records of trucking companies that use ELD's and those that do not"*

-Jim Johnston, OOIDA President and CEO.

You can read the Petitioners Brief from Case 15-3756 that was filed on 3/29/2016 on the OOIDA website by clicking this link to the PDF document: [Petitioners Brief](#)

**OOIDA's attempt to overturn the rule was denied on October 31, 2016. You can read the case [here](#).**



855-438-4771



1601 Texas Drive  
Glen Rose, Texas 76043



Sales@nftgps.com

# Why Choose Us?

ELD FACTS



**National Fleet Tracking** has over **30 years** experience in the transportation industry.

In that time, we've seen:

great swings in the market  
increased regulation  
shortage of qualified drivers  
advancements in technology

Maintaining an agile, flexible business approach has allowed us to thrive through changing times.

**Contact Us Today!**



**855-438-4771**



855-438-4771



1601 Texas Drive  
Glen Rose, Texas 76043



Sales@nftgps.com